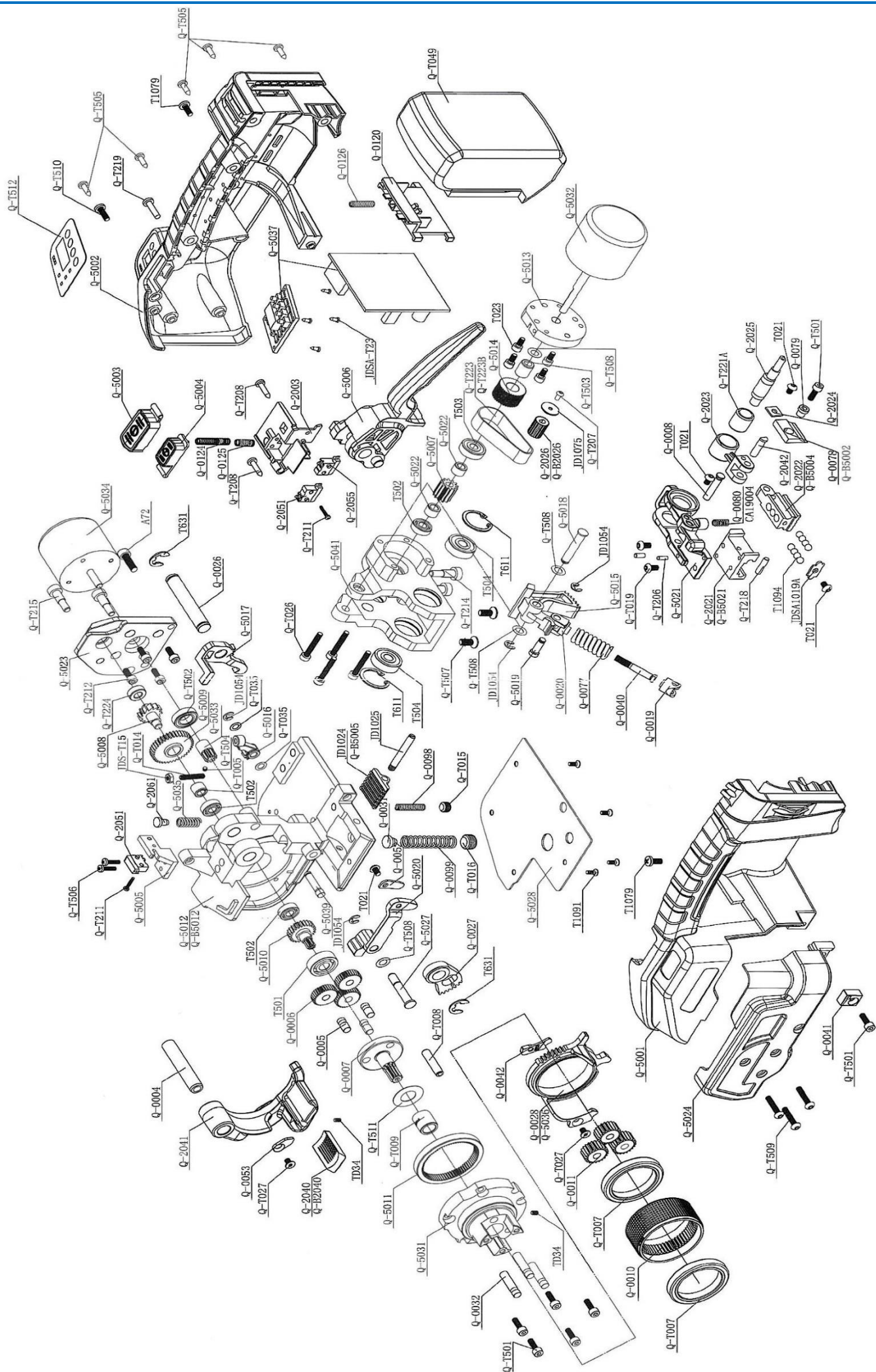


АККУМУЛЯТОРНЫЙ СТРЕПИНГ ИНСТРУМЕНТ

серии **JDC Q31**





№.	НАИМЕНОВАНИЕ	КОД ДЕТАЛИ	КОЛ-ВО
1	Base rocker pin	Q-0004	1
2	Planet carrier 2 pin	Q-0005	3
3	Plane planetary frame gear	Q-0006	3
4	Planet carrier	Q-0007	1
5	Chute spring fixed pin	Q-0008	1
6	Tightening roller	Q-0010	1
7	Tightening roller plane planetary gear	Q-0011	3
8	Fusion spring retaining bushing -1	Q-0019	1
9	Fusion spring retaining bushing -2	Q-0020	1
10	The handle pin	Q-0026	1
11	Sector gear	Q-0027	1
12	Cam plate	Q-0028	1
13	Limit thimble shaft	Q-0031	1
14	Pin 1	Q-0032	3
15	Fuse spring fixed pin	Q-0040	1
16	Guide belt rear 13mm	Q-0041	1
17	Guide beltfront13mm	Q-0042	1
18	Guide belt rear 13mm	Q-0052	1
19	Guide beltfront13mm	Q-0053	1
20	Weld limit spring	Q-0077	1
21	Cutter	Q-0078	1
22	Cutter bushing	Q-0079	1
23	Cutter compression spring	Q-0080	1
24	Fuse fixture reset spring	Q-0098	1
25	Thimble shaft spring	Q-0099	1
26	Battery tooth plate	Q-0120	1
27	Metal insert 1	Q-0122	2
28	Metal insert 2	Q-0123	2
29	Switch button spring	Q-0124	1
30	Weld button spring	Q-0125	1
31	Battery plunger spring	Q-0126	1
32	Cable bundle housing	Q-2003	1
33	Welding chute	Q-2021	1
34	Welding gear block	Q-2022	1
35	Connecting rod	Q-2023	1
36	Press block	Q-2024	1
37	Eccentric shaft	Q-2025	1
38	Small timing belt pulley	Q-2026	1
39	Tighten lower tooth plate	Q-2040	1
40	The base rocker	Q-2041	1
41	Fuse drive pin	Q-2042	1
42	Microswitch Zippy (right outgoing line)	Q-2051	2
43	Microswitch Zippy (left outgoing line)	Q-2055	1

№.	НАИМЕНОВАНИЕ	КОД ДЕТАЛИ	КОЛ-ВО
44	Resethe thimble axis	Q-2061	1
45	The left shell	Q-5001	1
46	The left shell	Q-5002	1
47	Tighten the button	Q-5003	1
48	Weld button	Q-5004	1
49	Bracket	Q-5005	1
50	Handle	Q-5006	1
51	Cylindrical gear	Q-5007	1
52	Ratchet wheel	Q-5008	1
53	Gear 1	Q-5009	1
54	Cog wheel	Q-5010	1
55	Weld mounting seat	Q-5011	1
56	Ontology building	Q-5012	1
57	Fuse motor mounting plate	Q-5013	1
58	Big timing belt pulley	Q-5014	1
59	Poke rod	Q-5015	1
60	Release link	Q-5016	1
61	Blocking lever	Q-5017	1
62	Pin roll	Q-5018	1
63	Fusion spring fixed pin	Q-5019	1
64	Belt guide	Q-5020	1
65	Welding skeleton	Q-5021	1
66	Bush	Q-5022	2
67	Tighten motor mounting plate	Q-5023	1
68	Left side cover	Q-5024	1
69	Guide pin	Q-5027	1
70	The base plate	Q-5028	1
71	Cam	Q-5031	1
72	Welding motor	Q-5032	1
73	Tighten motor gear	Q-5033	1
74	Tighten motor	Q-5034	1
75	Handle return spring	Q-5035	1
76	Circuit board	Q-5037	1
77	Pin 1	Q-5039	1
78	Internal gear	Q-5041	1
79	Fusion for tooth	JD1024	1
80	Fuse board fixing screw	JD1025	1
81	Open ring Φ 4	JD1054	4
82	Pulley gasket	JD1075	1
83	Sliding gear block baffle 1	JDSA1019A	1
84	Hexagon socket cylinder M5 x 16	A72	1
85	Hexagon nut M4	JDS-T15	1
86	Self-tapping screw M2.5 x 6	JDSA-T23	4

№.	НАИМЕНОВАНИЕ	КОД ДЕТАЛИ	КОЛ-ВО
87	Hexagon socket head screw M4 x 8	T023	4
88	Bearing 608	T501	1
89	619-6 bearing	T502	3
90	Bearing 626	T503	1
91	Ball bearing 627	T504	2
92	Hole card Φ22	T611	2
93	Cross half round head screw M4*10	T1079	2
94	Sunk screw M3 x 8	T1091	4
95	Steel ball Φ5	T1094	8
96	Inner hexangular set screw M3 x 5	TD34	2
97	One-way needle roller bearing HF0608	Q-T005	1
98	Bearing 61807-2Z	Q-T007	2
99	Spring pin Φ6 x 26	Q-T008	1
100	Needle bearing HK1015	Q-T009	1
101	Inner hexangular set screw M4 x 20	Q-T014	1
102	Set screw M8 x 6	Q-T015	1
103	Set screw M12 x 8	Q-T016	1
104	Shaft ring Φ8	Q-T017	2
105	Hexagon socket pan head screw M4 x 8	Q-T019	2
106	Hexagon socket cap screws M4 x 25	Q-T026	4
107	Hexagon countersunk head M4 x 6	Q-T027	2
108	Flat gasket M5 x g x o.2	Q-T035	2
109	Battery	Q-T049	1
110	Round pin Φ3x8	Q-T206	2
111	Hexagon flat head screw M3 x 6	Q-T207	1
112	Tapping screw M3.5 x 16	Q-T208	2
113	Cross grooved disc head M3 x 12	Q-T211	2
114	Hexagon socket cap screws M4 x 1 o	Q-T212	4
115	Contour bolt M5-Φ6-10	Q-T214	4
116	Round pin Φ4 x 16	Q-T218	1
117	Cross recess pan head screw M4 x 16	Q-T219	1
118	Needle bearing HK101615	Q-T221A	1
119	Synchronous belt	Q-T223	1
120	Bearing 628-6	Q-T224	1
121	Hexagon socket cap screws M4 x 12	Q-T501	7
122	Bearing 61800	Q-T502	1
123	One-way needle roller bearing HF0612	Q-T503	1
124	Inner hexangular set screw M3 x 3	Q-T504	1
125	Tapping screw M3.5 x 12	Q-T505	5
126	Cross recess pan head screw M3 x 12	Q-T506	2
127	Hexagon countersunk head M5 x 12	Q-T507	2
128	Flat gasket M6 x 12 x 0.2	Q-T508	4
129	Hexagon socket pan head screw M4 x 20	Q-T509	3

№.	НАИМЕНОВАНИЕ	КОД ДЕТАЛИ	КОЛ-ВО
130	Cross recess pan head screw M4 x 12	Q-T510	1
131	Flat gasket M12x24xQ.5	Q-T511	1
132	PVC panel	Q-T512	1
133	Cutter spring	CA19004	1
134	Cutter	Q-B5002	1
135	Welding gear block	Q-B5004	1
136	Welding lower tooth plate	Q-B5005	1
137	Welding chute	Q-B5021	1
138	Cam plate	Q-5036	1
139	Ontology building	Q-B5012	1
140	Tighten lower tooth plate	Q-B2040	1
141	Synchronous belt MXL-65 teeth-12mm	Q-T223B	1
142	Timing belt pulley A	Q-B2026	1
143	Guide beltfront13mm	Q-0042	1
144	Guide belt rear 13mm	Q-0053	1
145	Guide belt frontl 3mm	Q-0053	1
146	Sunk screw M4 x 6	Q-T027	2
147	Pan head screw M4 x 6	T021	1

